

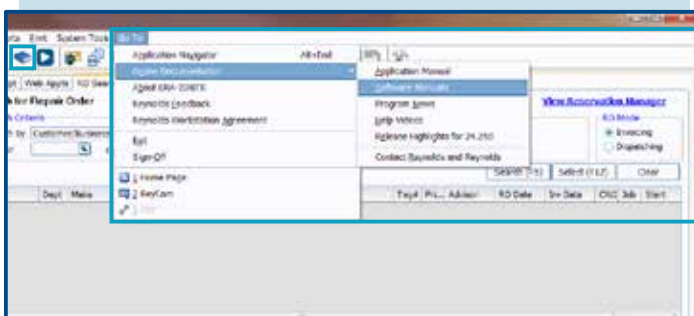
Electronic Documentation Viewer

Review application manuals and other reference materials directly from within your ERA-IGNITE system. Quickly find useful information related to daily procedures, application overviews, and the latest system enhancements with just a few clicks.

How It Works

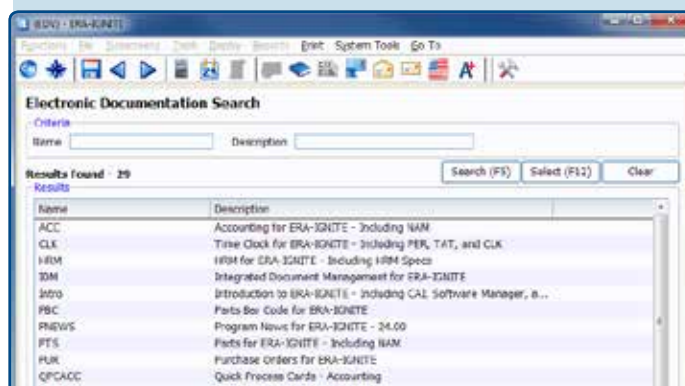
1

Access Electronic Documentation Viewer by clicking on the **blue book** icon in your toolbar or by clicking on **Online Documentation** under the **Go To** menu from any ERA-IGNITE window.



2

Search through the various online manuals, Program News releases, and Quick Process Cards.



3

Easily find words or phrases wherever they appear in online documentation using the Search tab, or save links to your most read topics under the Favorites tab.



For more information on training options, contact your account manager, call the Technical Assistance Center at 800.767.0080, or visit www.reyrey.com/training.